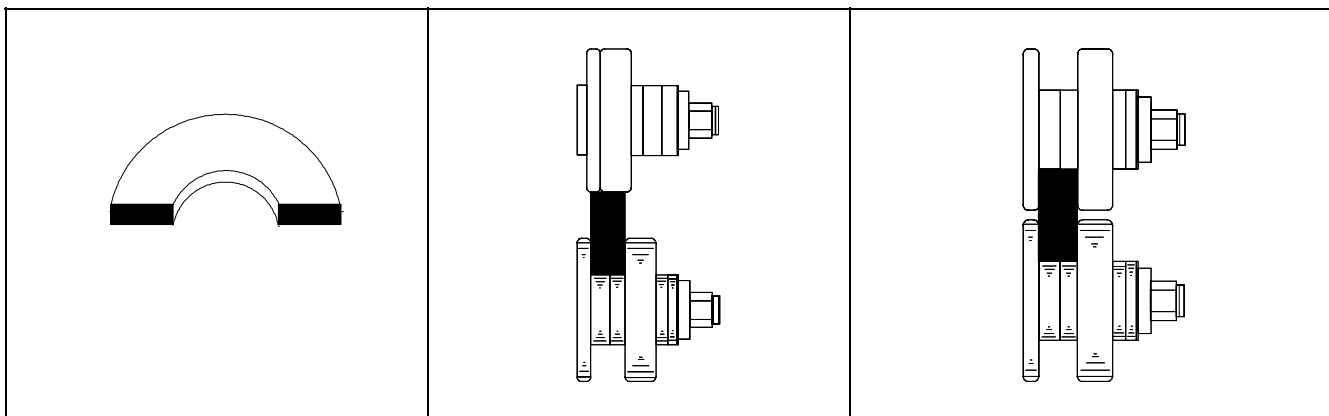
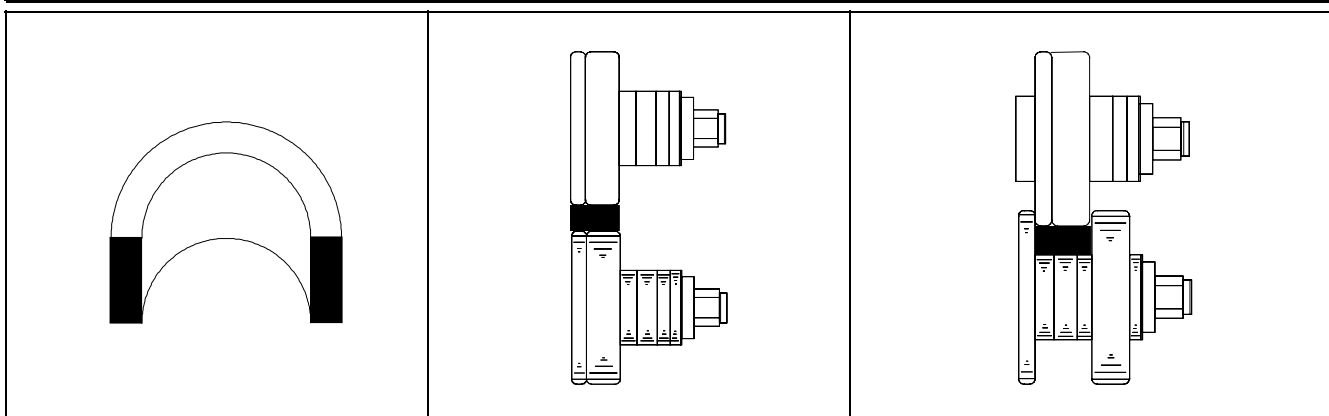
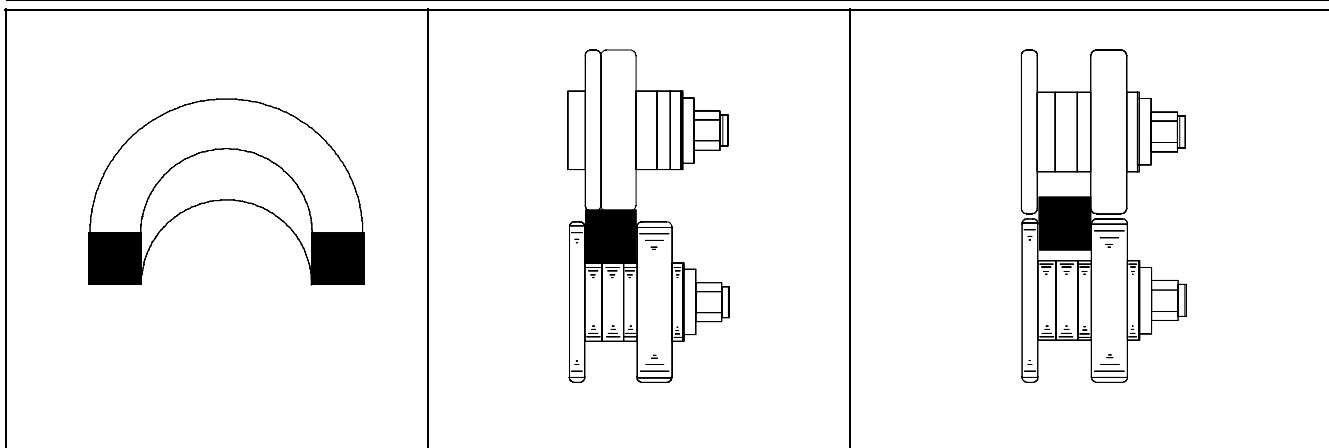
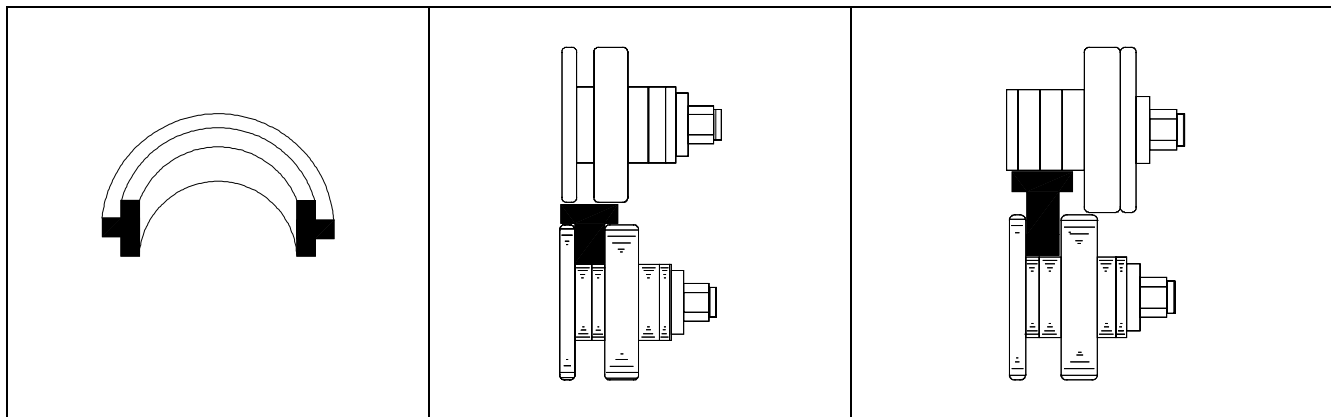
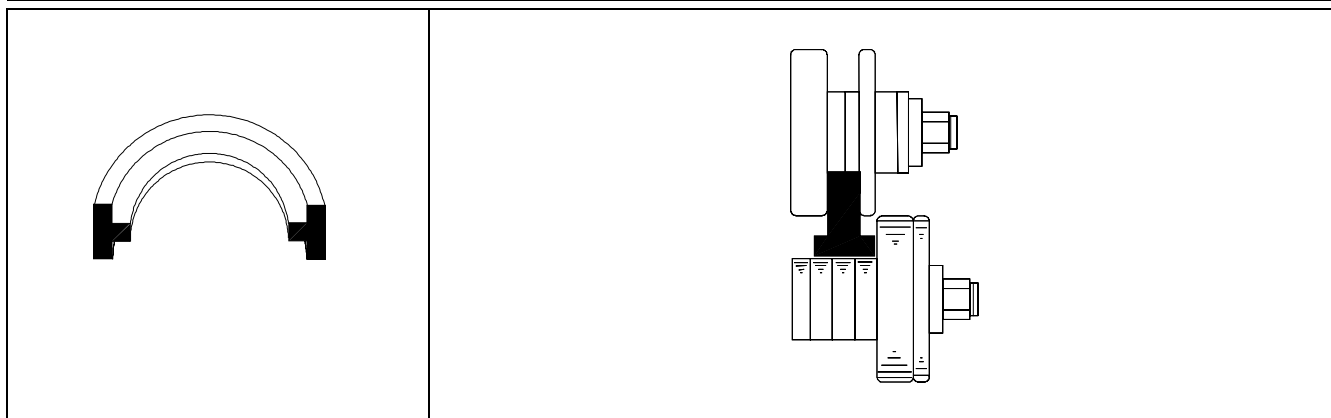
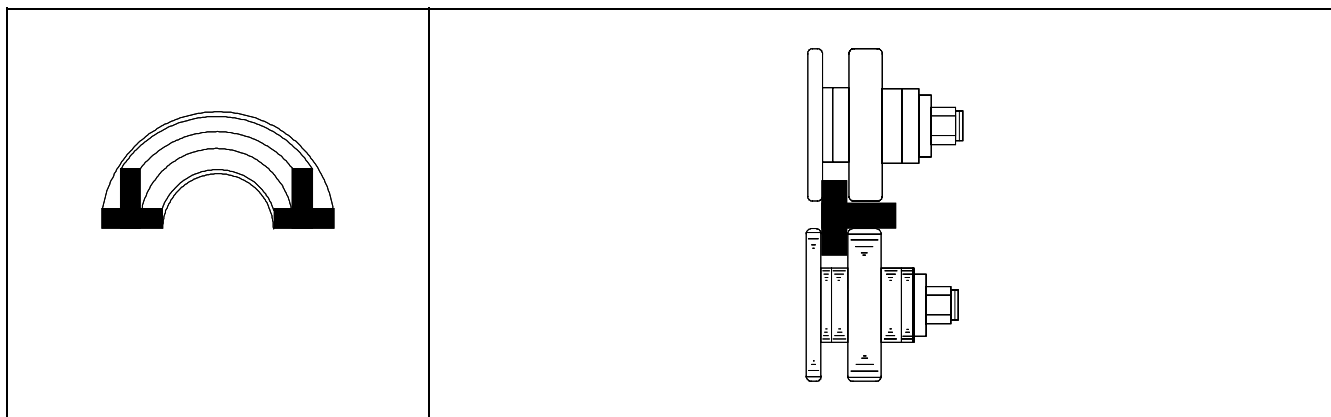
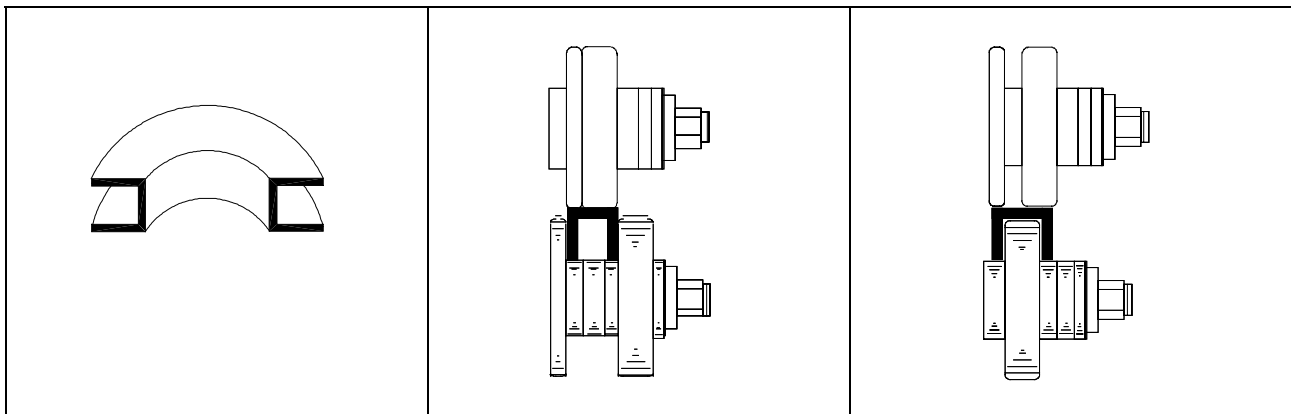
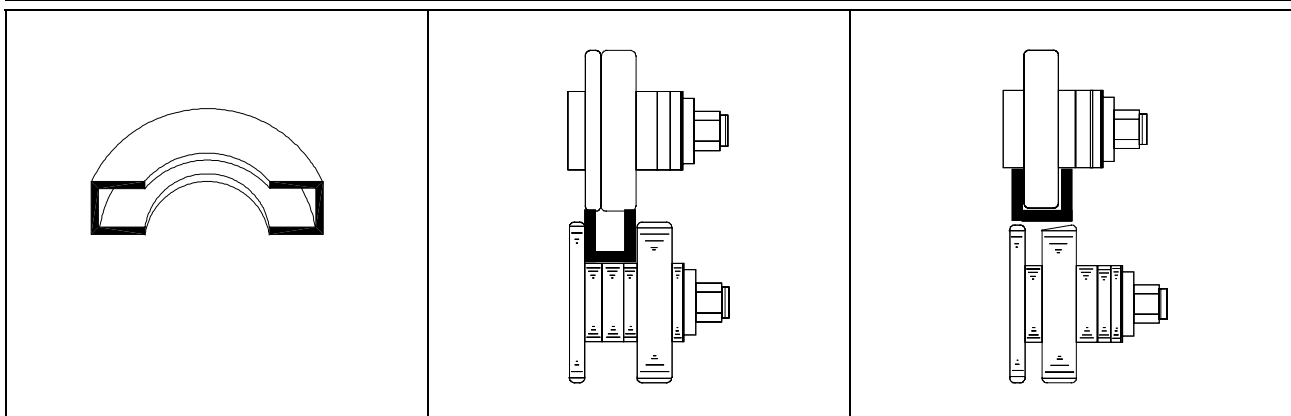
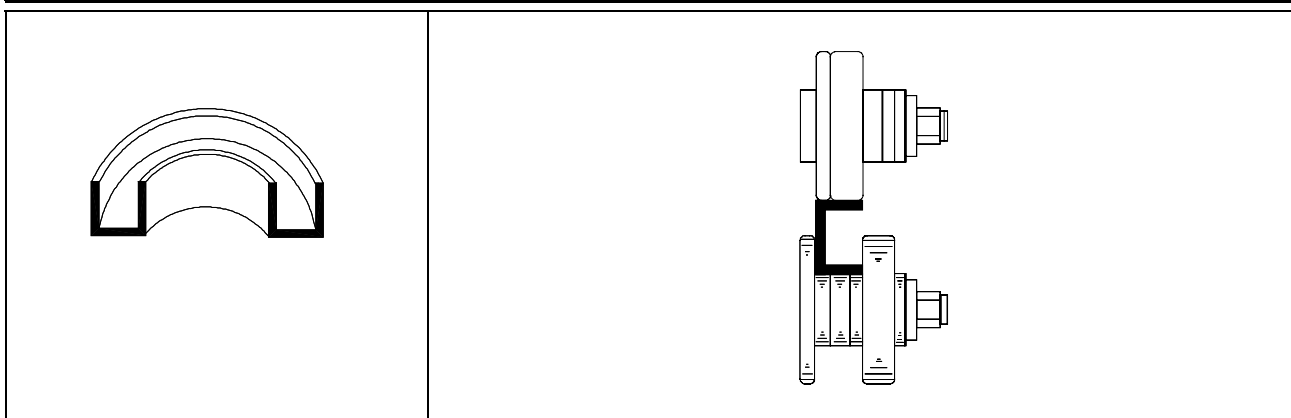
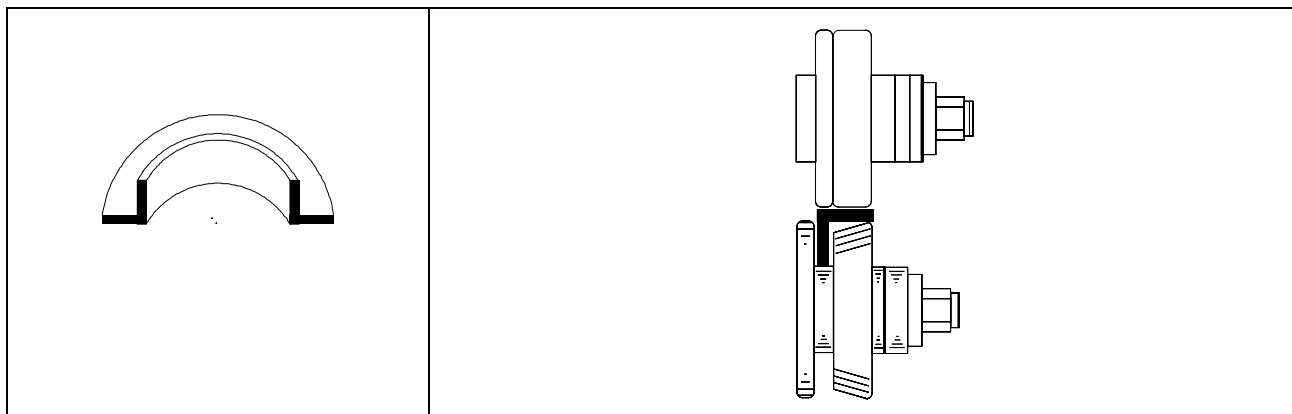
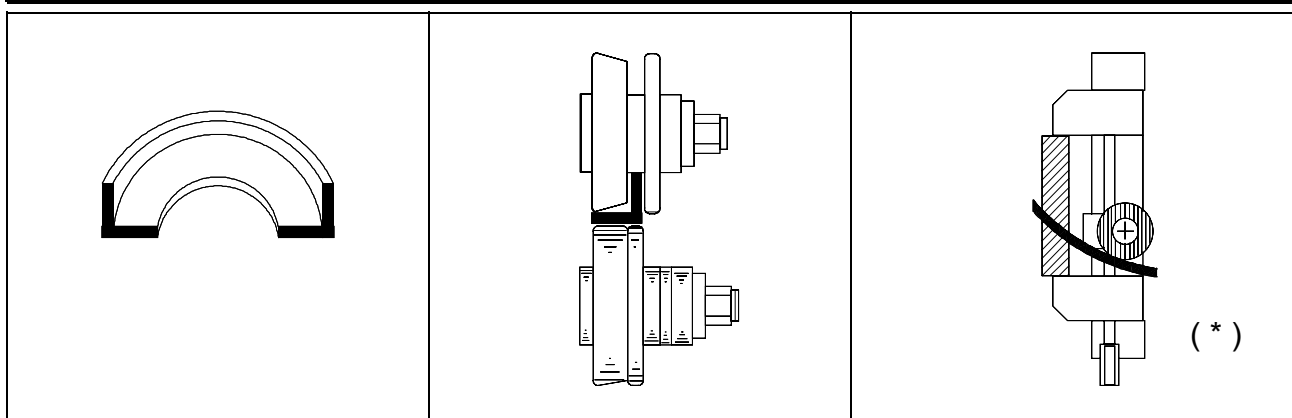


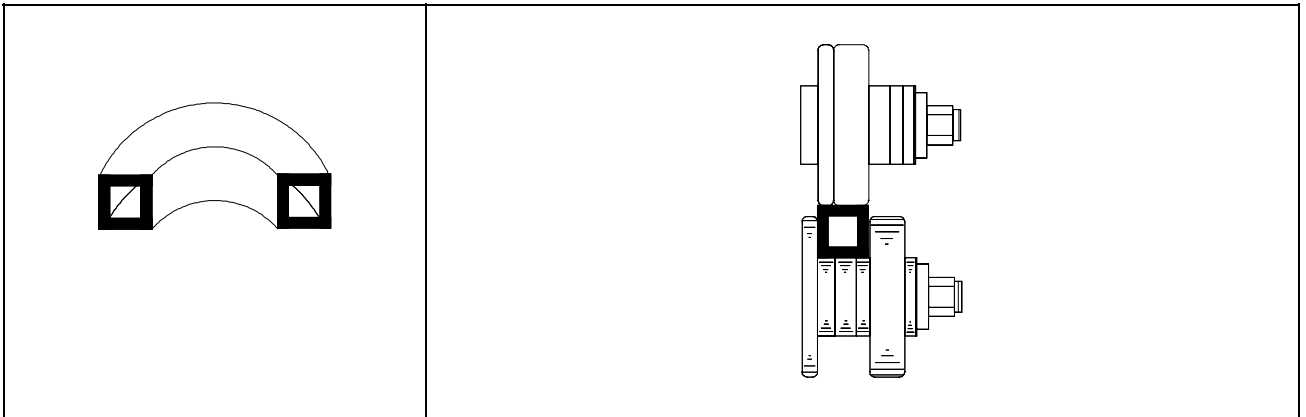
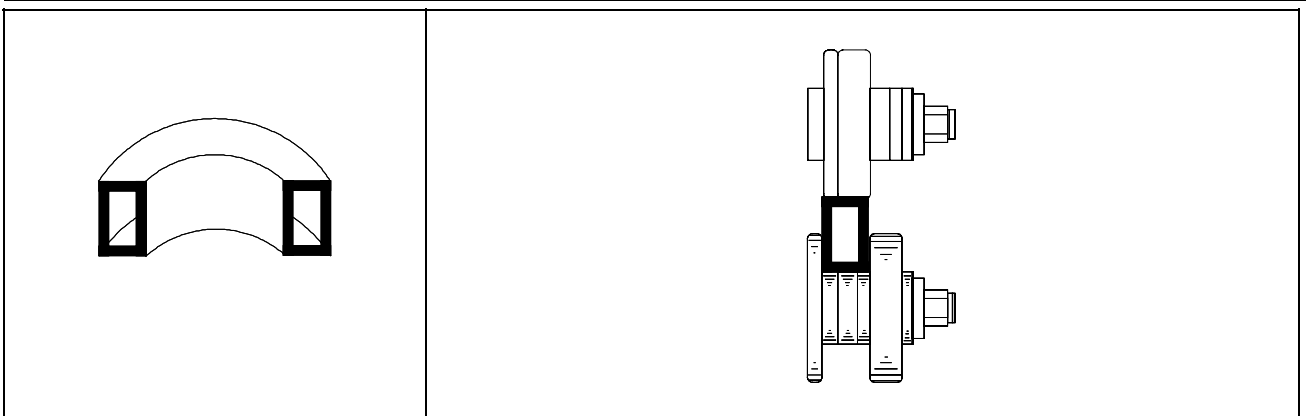
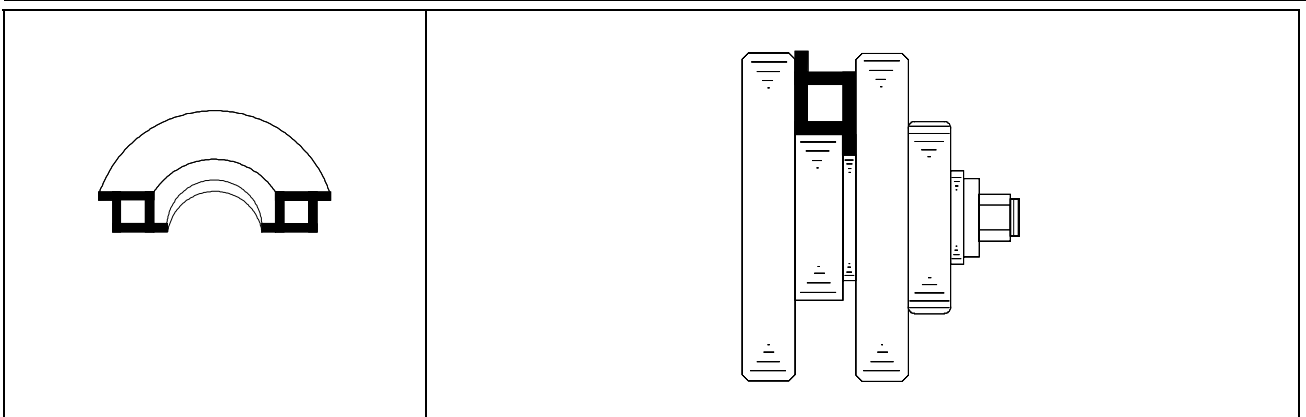
**1) PLOCHÉ A KVADRATICKÉ PROFILY / FLAT and SQUARE / FLACH UND QUADRATISCH/****Plochý profil vo vertikálnej polohe / flat side lying / flaches Profil in vertikaler Lage****Plochý profil v horizontálnej polohe / flat horizontal / flaches Profil in horizontaler Lage****Štvorcový profil plný / square / quadratisches Profil**

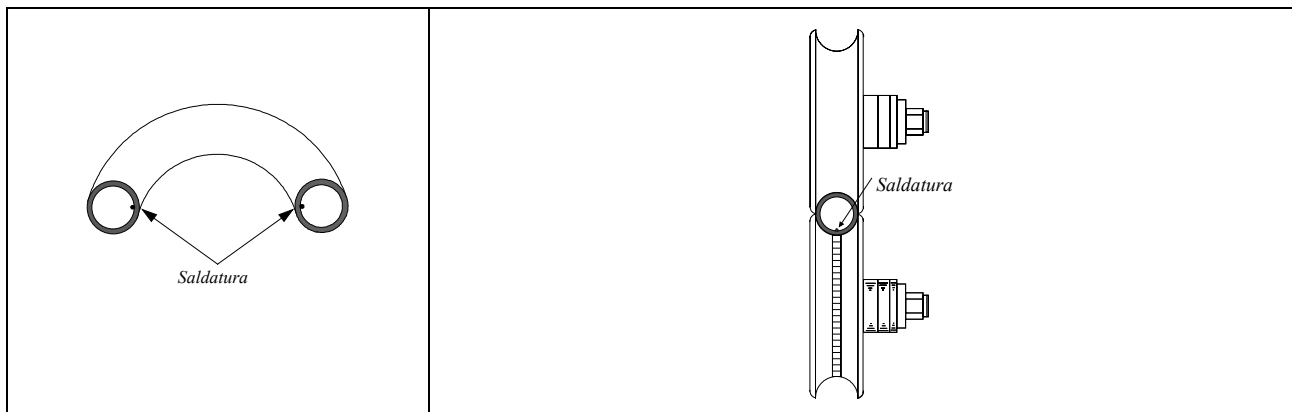
**2) T - PROFIL / T-SHAPED SECTIONS / T - PROFIL****T – profil stojina vonku / “T” with outer wing / T - Profil Steg außen****T – profil stojina vnútri / “T” with inner wing / “T” T - Profil Steg innen****T – profil postranne / “T” sideways / T - Profil in seitlicher Lage**

**3) U - PROFIL / "U"-SHAPED SECTIONS / U - PROFIL****U – profil stojina vonku / "U" with outer wing / "U" Steg außen****U – profil stojina vnútri / "U" with inner wing / "U" Steg innen****U – profil postranne / "U" sideways / "U" Profil in seitlicher Lage**

**A) L – PROFIL / ANGULAR SECTIONS / WINKEL PROFIL****L – profil stojina vonku / ang. with outer wing / Steg außen****L – profil stojina vnútri / ang. with inner wing / Steg innen**

[ I ]	[ SK ]
<p>Accanto allo schema di composizione delle matrici è stato in questo caso riportato anche il disegno dell'accessorio "RADDRIZZATORE SPECIALE" che deve essere usato per questo tipo di profilo.</p>	<p>Pri zakružovaní L –profilov je vhodné používať aj "ŠPECIÁLNY USMERŇOVAČ" , ako je zobrazené na obr. ( * ).</p>
[ GB ]	[ D ]
<p>Near this composition scheme there is a drawing of a special accessory: the SPECIAL STRAIGHTENER, used for this kind of section.</p>	<p>Neben dem Zusammensetzungsschema der Walzen gibt es auch die Zeichnung des "SPEZIALGLEICHRICHTERS", der mit diesem Profil benutzt werden soll.</p>

**B) RÔZNE HRANATÉ PROFILY PRÁZDNE / BOX-SHAPED SECTIONS /  
VERSCHIEDENE HOHLPROFILE****Profil so štvorcovým prierezom (jokl) / square box-shaped section / quadratisch****Profil s obdĺžnikovým prierezom / rectangular box-sh. sect. / rechteckig****Profil "Z" / "Z" box-shaped section / "Z" förmig**

**C) PROFILY S OKRÚHLYM PRIEREZOM A TRUBKY / ROUND AND TUBE-SHAPED SECTIONS/ ROHR UND RUND MATERIAL****Trubky / tube / Röhrenförmig**

- [ SK ] Saldatura = Zváraný švík
- [ F ] Saldatura = Soudure
- [ GB ] Saldatura = Weld
- [ D ] Saldatura = Schweißnaht

**Gulatina / round / Rund**